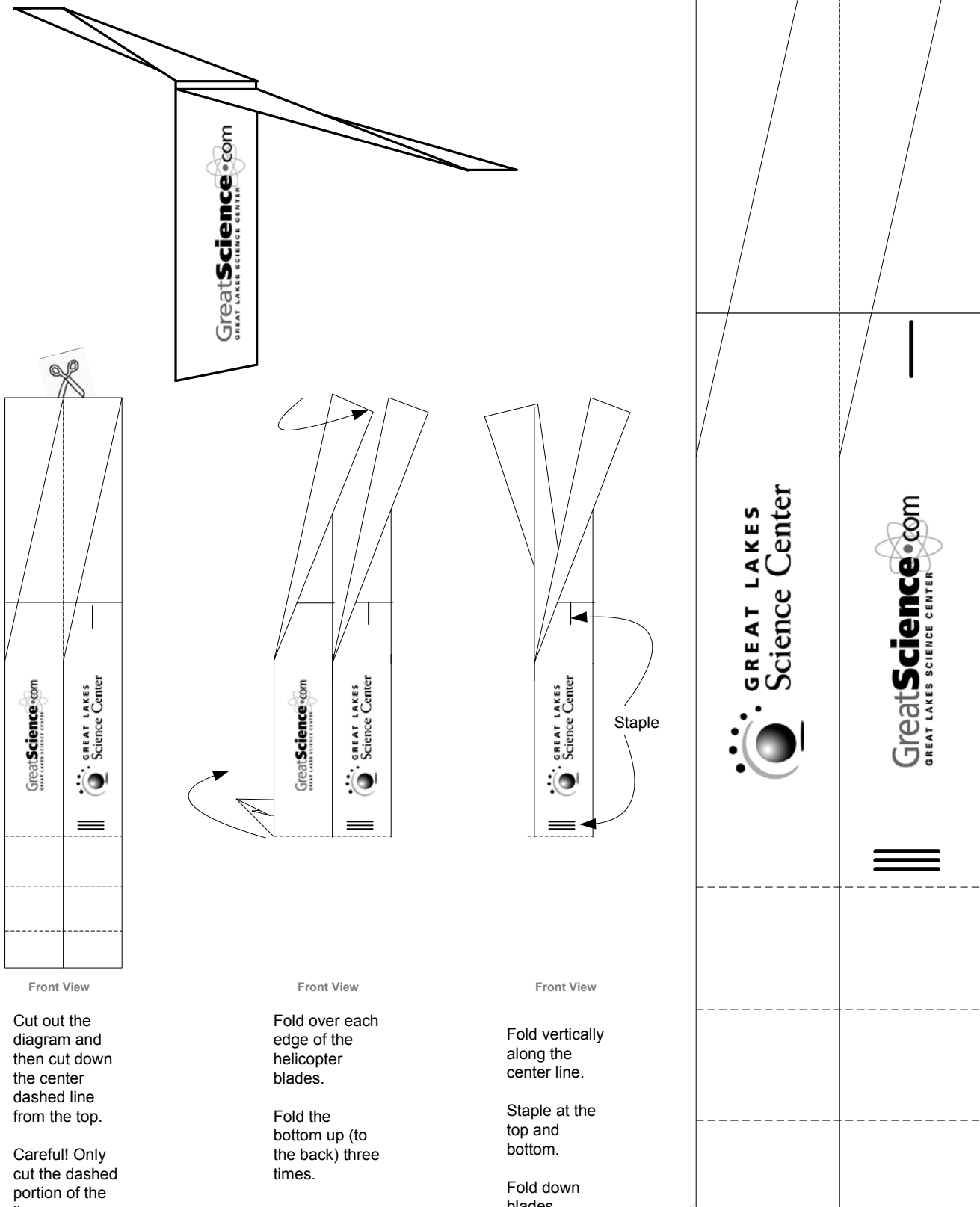


The Erie Copter



Front View

Cut out the diagram and then cut down the center dashed line from the top.

Careful! Only cut the dashed portion of the line.

Front View

Fold over each edge of the helicopter blades.

Fold the bottom up (to the back) three times.

Front View

Fold vertically along the center line.

Staple at the top and bottom.

Fold down blades.